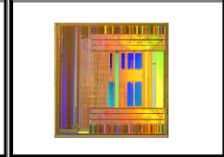
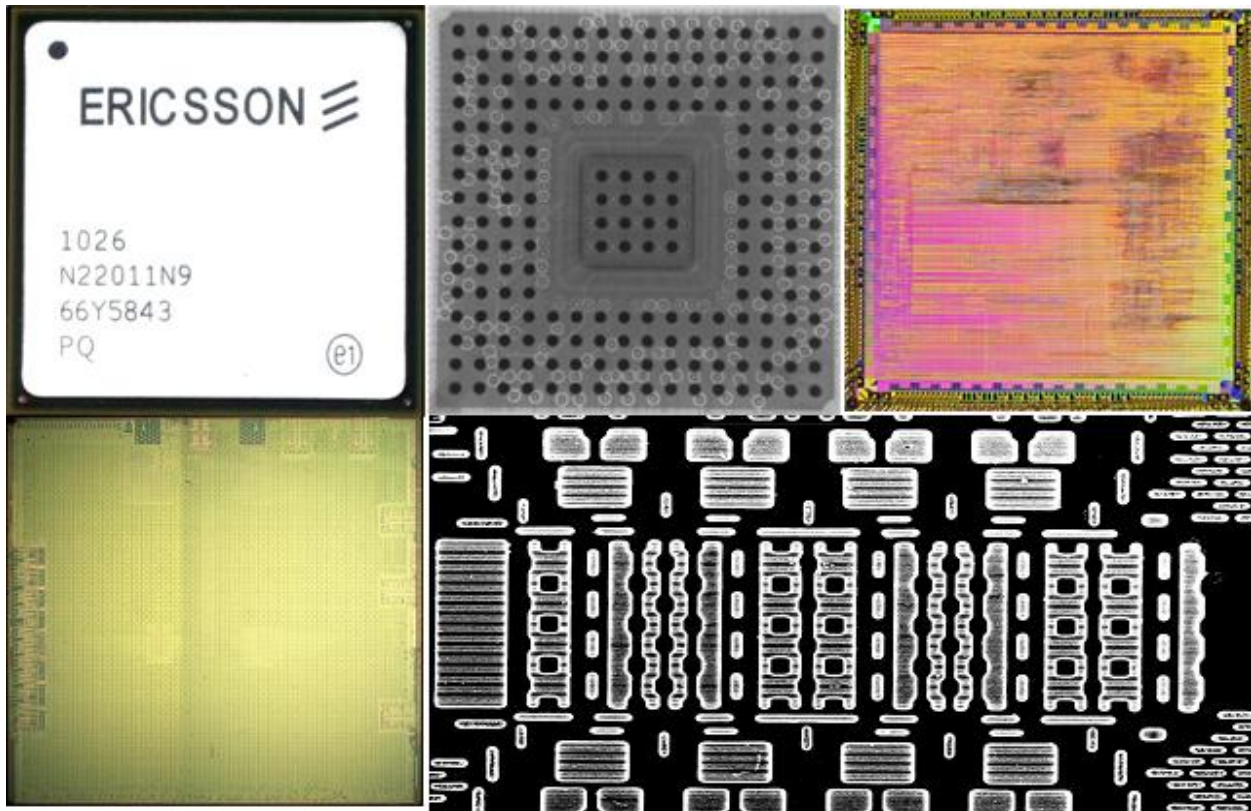


Earl Lum  
+1-650-430-2221  
[elum@ejlwireless.com](mailto:elum@ejlwireless.com)



### Ericsson RBS6000 Digital Baseband Units ASICs Report

July 2015



Entire contents © 2015 EJL Wireless Research LLC. All Rights Reserved. Reproduction of this publication in any form without prior written permission is strictly forbidden and will be prosecuted to the full extent of US and International laws. The transfer of this publication in either paper or electronic form to unlicensed third parties is strictly forbidden. The information contained herein has been obtained from sources EJL Wireless Research LLC deems reliable. EJL Wireless Research disclaims all warranties as to the accuracy, completeness, or adequacy of such information. EJL Wireless Research LLC shall bear no liability for errors, omissions, or inadequacies in the information contained herein or for the interpretation thereof. The reader assumes sole responsibility for the selection of these materials to achieve their intended results. The opinions expressed herein are subject to change without notice. All product and company names are trademarks™ or registered® trademarks of their respective holders. Use of them does not imply any affiliation with or endorsement by them.

# TABLE OF CONTENTS

|                                                                   |    |
|-------------------------------------------------------------------|----|
| EXECUTIVE SUMMARY .....                                           | 7  |
| DU Board Tear-downs + ASIC RE Analysis = Invaluable Insight ..... | 7  |
| Radio System Architecture History .....                           | 7  |
| BTS Hardware Development Compared with Software Development ..... | 8  |
| Key Takeaways: Carrier Grade Cost Structure Pressure .....        | 10 |
| CHAPTER 1: ERICSSON RADIO SYSTEM ARCHITECTURE .....               | 11 |
| 1.1 DU Boards and their ASICs .....                               | 11 |
| 1.2 Ericsson Radio System Architecture .....                      | 12 |
| 1.3 SOFTWARE-DEFINED RADIO .....                                  | 12 |
| 1.4 Multi-standard RAN Complexity .....                           | 13 |
| 1.5 All RAN Ericsson Radio System (ERS) .....                     | 16 |
| 1.6 DU ASIC CHART Overview .....                                  | 18 |
| CHAPTER 2: DIGITAL UNIT (DU) OVERVIEW .....                       | 19 |
| 2.1 DU System-Level Architecture Support for ASICs .....          | 19 |
| 2.2 DU Board-Level Architecture .....                             | 21 |
| 2.3 DUG Subsystem .....                                           | 24 |
| 2.4 DUW Subsystem .....                                           | 25 |
| 2.5 DUL and DUS Subsystem .....                                   | 27 |
| 2.6 Common Operation and Maintenance (O&M) Features .....         | 29 |
| 2.7 Board/ASIC Trace and Debug Overview .....                     | 30 |
| CHAPTER 3: RBS DIGITAL UNIT (DU) PROCESSING .....                 | 33 |
| 3.1 DU Analysis Scope/Process .....                               | 33 |
| 3.2 DUL/DUS Subsystem Functionality .....                         | 36 |
| 3.3 In-depth ASIC Analysis Process .....                          | 37 |
| 3.4 Multi-Core Ecosystem .....                                    | 39 |
| 3.5 Atypical Trace and Debug Capabilities .....                   | 40 |
| 3.6 DU Architectural Summary .....                                | 42 |
| CHAPTER 4: DU ASIC OVERVIEW .....                                 | 43 |
| 4.1 ASIC Process Nodes .....                                      | 43 |
| 4.2 ASIC Fabrication Source Analysis .....                        | 45 |
| 4.3 Silicon Area and Function .....                               | 47 |
| 4.4 DSP/Multi-Core Evolution .....                                | 47 |
| CHAPTER 5: MULTI-CORE/DSP OVERVIEW .....                          | 50 |
| 5.1 Shift from PowerPC® to ARM Ecosystem .....                    | 50 |
| 5.2 DSP Core Technology/Analysis .....                            | 52 |
| 5.3 Internal DSP Cores .....                                      | 52 |
| CHAPTER 6: DUG ASICs FOR GSM .....                                | 57 |
| 6.1 GSM Processing Overview .....                                 | 57 |
| 6.2 Basic Structure and Architecture .....                        | 58 |
| 6.3 I/O Analysis .....                                            | 63 |
| 6.4 DUG ASIC-2 Summary of Findings .....                          | 63 |
| CHAPTER 7: DUW ASICs FOR W-CDMA .....                             | 64 |
| 7.1 DUW ASICs Overview .....                                      | 64 |
| 7.2 DUW ASIC #1 Package Analysis .....                            | 67 |
| 7.3 DUW ASIC #1 Chip Analysis .....                               | 67 |
| 7.4 DUW ASIC #1 Functional Analysis .....                         | 71 |
| 7.5 DUW ASIC #2 Package Analysis .....                            | 72 |
| 7.6 DUW ASIC #2 Chip Analysis .....                               | 73 |
| 7.7 DUW ASIC #2 Special Structures .....                          | 78 |

|                                                          |     |
|----------------------------------------------------------|-----|
| CHAPTER 8: DUL ASIC ANALYSIS .....                       | 80  |
| 8.1 DUL ASIC Overview .....                              | 80  |
| 8.2 DUL ASIC Package Analysis .....                      | 81  |
| 8.3 DUL ASIC Chip Analysis .....                         | 82  |
| 8.4 DUL ASIC CPU Functions .....                         | 88  |
| 8.5 DSP Functions .....                                  | 93  |
| 8.6 Digital and Analog I/Os .....                        | 98  |
| CHAPTER 9: DUS ASIC ANALYSIS .....                       | 103 |
| 9.1 DUS ASIC Overview .....                              | 103 |
| 9.2 DUS ASIC Package Analysis .....                      | 104 |
| 9.3 DUS ASIC Chip Analysis .....                         | 104 |
| 9.4 Evolution from Previous ASICs .....                  | 109 |
| 9.5 Core Processor Functions .....                       | 115 |
| 9.6 DUS DSP Complex .....                                | 117 |
| 9.7 Special Structures, Digital and Analog I/Os .....    | 122 |
| 9.8 Other DUS ASIC Proprietary Technology Analysis ..... | 131 |
| CHAPTER 10: CONCLUSION .....                             | 139 |
| APPENDIX A - ACRONYMS .....                              | 142 |
| APPENDIX B - CHIP AREAS FOR FUTURE ANALYSIS .....        | 144 |

## TABLES

|                                                                                  |     |
|----------------------------------------------------------------------------------|-----|
| Table 1: Ericsson BTS ASICs and Digital Unit (DU) Hardware.....                  | 7   |
| Table 2: Six Major Ericsson Digital Baseband Processing ASICs.....               | 18  |
| Table 3: Ericsson DUG, DUW, DUL and DUS ASIC Silicon Chart.....                  | 33  |
| Table 4: Ericsson DUG, DUW, DUL and DUS ASIC Software Chart .....                | 34  |
| Table 5: Ericsson DU DSP Block Area Chart; from DUG, DUW, DUL and DUS ASICs..... | 48  |
| Table 6: Essential RT/Embedded Communications Proprietary Technology .....       | 50  |
| Table 7: Ericsson BTS ASIC and Digital Unit (DU) Hardware Components.....        | 66  |
| Table 8: DUL Chip/ASIC Proprietary Technology Overview .....                     | 86  |
| Table 9: DUL ASIC Cortex™-R MPCore™ Memory/Register Overview.....                | 89  |
| Table 10: DUL ASIC ETM™-R4/R5 Register/Memory Overview.....                      | 89  |
| Table 11: ETM™-R4/R5 Register/Memory Count .....                                 | 90  |
| Table 12: ARM Cortex™-R5 Dual/MPCore™ Area Analysis .....                        | 92  |
| Table 13: DUL ASIC DSP Core Overview S .....                                     | 93  |
| Table 14: DUL ASIC Digital and Analog I/Os.....                                  | 99  |
| Table 15: DUS ASIC's Memory Cell Types .....                                     | 107 |
| Table 16: Comparing DUL/DUS ASIC's ARM Cortex™-R MPCore™ Memory Blocks.....      | 110 |
| Table 17: Comparing ARM Proprietary Technology in DUL/DUS ASICs.....             | 111 |
| Table 18: Comparing I/O and I/O Subsystems in DUL and DUS ASICs .....            | 114 |
| Table 19: Comparing ARM Proprietary Technology in DUL/DUS ASICs.....             | 115 |
| Table 20: DUS ASIC DSP Area 1 and 2 Memory Blocks .....                          | 118 |
| Table 21: DUS ASIC DSP H Block Detail.....                                       | 120 |
| Table 22: DUS E Block Ethernet Memory and Buffer Structures.....                 | 134 |
| Table 23: DUS F Block Memory Structure Analysis .....                            | 135 |
| Table 24: DUS ASIC G Block Detail .....                                          | 137 |
| Table 25: DUS ASIC "K" Block .....                                               | 138 |
| Table 26: Ericsson Radio System Architectural BTS Roadmap Requirements.....      | 140 |

## EXHIBITS

|                                                                                                |    |
|------------------------------------------------------------------------------------------------|----|
| Exhibit 1: Ericsson BTS System Hardware Release, 2003-2016.....                                | 8  |
| Exhibit 2: RBS 6000 showing "Digital Units" with RUs and RRUs. ....                            | 11 |
| Exhibit 3: GSM RAN Diagram.....                                                                | 13 |
| Exhibit 4: W-CDMA RAN Diagram.....                                                             | 14 |
| Exhibit 5: LTE RAN Diagram.....                                                                | 15 |
| Exhibit 6: Multi-Radio Access Technology Diagram.....                                          | 15 |
| Exhibit 7: Ericsson Radio System BTS RBS 2000/3000 and RBS 6000 Evolution.....                 | 16 |
| Exhibit 8: Example of DU Multi-standard Mix Mode RBS System.....                               | 17 |
| Exhibit 9: Digital Unit Software Architectural Mapping.....                                    | 19 |
| Exhibit 10: Mapping Basic LTE Software Functions to Hardware Proprietary Technology Cores..... | 20 |
| Exhibit 11: Baseband Digital Unit – ERS Baseband DUS XX Block Diagram.....                     | 22 |
| Exhibit 12: LTE Layer Multi-core SoC Software - Core and DSP.....                              | 23 |
| Exhibit 13: DUG 20 01 – Front Panel.....                                                       | 24 |
| Exhibit 14: DUG 20 01 – Board (Top View) with Heatsinks.....                                   | 25 |
| Exhibit 15: DUW 20 01 – Front Panel.....                                                       | 26 |
| Exhibit 16: DUW 10, DUW 20, DUW 30, DUW 11, DUW 31, and DUW 41 versions.....                   | 26 |
| Exhibit 17: DUW RF/IF board and the Baseband I/O Board.....                                    | 26 |
| Exhibit 18: DUL 20 01 – Front Panel markings, ports, and indicators.....                       | 27 |
| Exhibit 19: DUS 31 01/DUS 41 01 – Front Panel.....                                             | 27 |
| Exhibit 20: Top View DUL 20 01 Board.....                                                      | 28 |
| Exhibit 21: DUS 41 01 Board Bottom View (L) and Top-View (R).....                              | 29 |
| Exhibit 22: Direct to DU ASIC Equipment and Managed Objects w/LMT port.....                    | 29 |
| Exhibit 23: DUL ASIC Identified ROM and Register Structures.....                               | 31 |
| Exhibit 24: Debug Ports on DUL board with a Serial GigaBit Trace Interface.....                | 32 |
| Exhibit 25: DUL Package differences between "R1A" and "R2A" ASIC Revisions.....                | 34 |
| Exhibit 26: Ericsson RBS 6000 DU ASICs.....                                                    | 35 |
| Exhibit 27: Ericsson DUG, DUW, DUL, and DUS ASICs.....                                         | 36 |
| Exhibit 28: Ericsson DUS ASIC Revisions.....                                                   | 36 |
| Exhibit 29: Software/OS Boot Device Loading and Booting ASIC Devices.....                      | 38 |
| Exhibit 30: DUx Address and ASIC MO Mapping.....                                               | 39 |
| Exhibit 31: Ericsson DUW, DUL, and DUS ASIC Processor/DSP Test Headers.....                    | 41 |
| Exhibit 32: Shared DUW and DUL ASIC Structures.....                                            | 42 |
| Exhibit 33: ASIC Process Node Identification.....                                              | 43 |
| Exhibit 34: ASIC Process Node Identification.....                                              | 44 |
| Exhibit 35: IBM ASIC Process Technology Roadmap.....                                           | 45 |
| Exhibit 36: TSMC ASIC Process Fabrication Technologies.....                                    | 46 |
| Exhibit 37: Ericsson use of TSMC ASIC Fabrication Technology.....                              | 46 |
| Exhibit 38: Ericsson DU ASIC Processor Area Comparison.....                                    | 47 |
| Exhibit 39: Ericsson DU ASIC DSP Block Comparisons.....                                        | 48 |
| Exhibit 40: Ericsson DUW ASIC Logic-Based Computation Example.....                             | 49 |
| Exhibit 41: DUS ASIC RapidIO® Buffer.....                                                      | 51 |
| Exhibit 42: DSP Proprietary Technology Block Evolution in Ericsson DU ASICs: 2003 to 2011..... | 52 |
| Exhibit 43: SoC & ASIC Design Philosophy at Ericsson.....                                      | 54 |
| Exhibit 44: DSP Core Hardware/Software Tradeoff Example for Ericsson DUW ASIC Design.....      | 55 |
| Exhibit 45: Die Size Progression in the Ericsson DUG, DUW, DUL, & DUS ASICs.....               | 56 |
| Exhibit 46: DSP PSU (Power-Scaling Unit) Proprietary Technology.....                           | 56 |
| Exhibit 47: DUG ASICs #1 and #2.....                                                           | 57 |
| Exhibit 48: DUG ASIC #1 Markings.....                                                          | 58 |
| Exhibit 49: DUG ASIC #1 PowerPC® Core.....                                                     | 58 |
| Exhibit 50: Digital Unit for GSM-DUG 20 01 Front Panel & Mechanical.....                       | 59 |
| Exhibit 51: DUG Diagram and Typical Multi-RAT RBS 6000 Use.....                                | 59 |
| Exhibit 52: DUG Block Diagram.....                                                             | 60 |
| Exhibit 53: DUG ASIC #2 Markings.....                                                          | 60 |
| Exhibit 54: Digital Unit for GSM-DUG ASIC #2 Overview.....                                     | 61 |
| Exhibit 55: DUG ASIC #2 DSP Core.....                                                          | 62 |
| Exhibit 56: DUG ASIC #2 Dual PowerPC® Core.....                                                | 62 |
| Exhibit 57: DUG ASIC #2 Processor Core Complex w/PLL.....                                      | 63 |
| Exhibit 58: RBS 6000 DUW Architecture featuring DUW ASICs #1 and #2.....                       | 64 |
| Exhibit 59: DUW High Level Architecture Block Diagram.....                                     | 65 |
| Exhibit 60: DUW ASIC #1 Package Overview.....                                                  | 67 |
| Exhibit 61: DUW ASIC #1 Package X-Ray.....                                                     | 67 |
| Exhibit 62: DUW ASIC #1 Top Metal Layer with Magnified Views of the Die Logo and I/O Pads..... | 68 |
| Exhibit 63: DUW ASIC #1 Si Poly Overview.....                                                  | 69 |

|                                                                                      |     |
|--------------------------------------------------------------------------------------|-----|
| Exhibit 64: DUW ASIC #1 Poly Layout SEM .....                                        | 70  |
| Exhibit 65: DUW ASIC #1 Memory Structure Decomposition .....                         | 71  |
| Exhibit 66: DUW ASIC #1 Memory Structures A-F Block Decomposition .....              | 71  |
| Exhibit 67: DUW ASIC #2 Package Overview .....                                       | 72  |
| Exhibit 68: DUW ASIC #2 Package X-Ray .....                                          | 72  |
| Exhibit 69: DUW ASIC #2 Die Overview and Markings .....                              | 73  |
| Exhibit 70: DUW ASIC #2 Main Feature Overview .....                                  | 74  |
| Exhibit 71: DUW ASIC #2 I/O Match ULMA I/O Subsystems .....                          | 75  |
| Exhibit 72: DUW ASIC #2 Processing Technology .....                                  | 75  |
| Exhibit 73: DUW ASIC #2 Analog Power Block .....                                     | 76  |
| Exhibit 74: DUW ASIC #2 I/O Structures .....                                         | 76  |
| Exhibit 75: DUW ASIC #2 Special Power Management Structures .....                    | 77  |
| Exhibit 76: DUW ASIC #2 Special Structure .....                                      | 78  |
| Exhibit 77: DUW ASIC #2 DSP Core Structures vs. DUL ASIC DSP Core Structures .....   | 79  |
| Exhibit 78: DUW ASIC #2 Memory Bit-Cell Comparison to DUL ASIC .....                 | 79  |
| Exhibit 79: DUL ASIC Board-Level Overview .....                                      | 80  |
| Exhibit 80: DUL ASIC Package Revisions .....                                         | 81  |
| Exhibit 81: DUL ASIC Package X-ray with Side-View .....                              | 81  |
| Exhibit 82: DUL ASIC Package Information .....                                       | 82  |
| Exhibit 83: DUL ASIC Die Size and Top Metal Layer .....                              | 82  |
| Exhibit 84: DUL ASIC Die Markings .....                                              | 83  |
| Exhibit 85: DUL ASIC Block Overview; DSP Cores, Analog, and I/O Blocks .....         | 85  |
| Exhibit 86: DUL ASIC Si Structures .....                                             | 87  |
| Exhibit 87: DUL ASIC Cortex-R MPCore™ Layout Detail .....                            | 88  |
| Exhibit 88: Suspected ARM CoreSight™-based ETM™ .....                                | 90  |
| Exhibit 89: DUL ASIC Cortex™-R5 Dual/MPCore™ Analysis .....                          | 91  |
| Exhibit 90: ARM Cortex™-R5 Dual/MPCore™ Area Analysis .....                          | 92  |
| Exhibit 91: Comparison of ARM Cortex™-R5 Area to Known Cortex™-R4 Chip .....         | 93  |
| Exhibit 92: DUL ASIC DSP Core 1 .....                                                | 94  |
| Exhibit 93: DUL ASIC DSP Core 2 .....                                                | 95  |
| Exhibit 94: DUL/DUS ASIC DSP Control Logic .....                                     | 96  |
| Exhibit 95: DUL ASIC DSP Control Logic and PSU .....                                 | 97  |
| Exhibit 96: DUL ASIC I/O Overview .....                                              | 98  |
| Exhibit 97: Primary DUL ASIC Analog Block AN3 Overview .....                         | 99  |
| Exhibit 98: Primary DUL ASIC Analog Block AN2 Overview .....                         | 100 |
| Exhibit 99: DUL ASIC Analog Block AN1 Overview .....                                 | 100 |
| Exhibit 100: Primary DUL Analog Blocks Overview .....                                | 101 |
| Exhibit 101: DUL ASIC #2 Temperature Sensor Detail .....                             | 102 |
| Exhibit 102: DUS ASIC Board-Level Overview .....                                     | 103 |
| Exhibit 103: DUS ASIC Package and Die Overview .....                                 | 104 |
| Exhibit 104: DUS ASIC OM, Plan-view, Top, with Die Markings .....                    | 105 |
| Exhibit 105: DUS ASIC SEM Cross Section (Seal Ring) .....                            | 105 |
| Exhibit 106: DUS ASIC Memory Types .....                                             | 107 |
| Exhibit 107: DUS ASIC Overview showing ARM Cortex™-R7 MPCore™ and major blocks ..... | 108 |
| Exhibit 108: DUL/DUS ASIC DSP Cores Comparison .....                                 | 108 |
| Exhibit 109: DUS ASIC Block Overview; Areas 1 to 5, Analog, and Blocks A-X .....     | 109 |
| Exhibit 110: Comparison of DUW and DUL ASICs to the DUL ASIC .....                   | 111 |
| Exhibit 111: Comparison of ARM Cortex™-R5 Dual Core to ARM Cortex™-R7 MPCore™ .....  | 112 |
| Exhibit 112: Evolution of DSP Complex in DUL and DUS ASICs .....                     | 113 |
| Exhibit 113: Cortex™ R-7 MPCore™ ETM™ .....                                          | 116 |
| Exhibit 114: DUS ASIC Cortex™ R-7 MPCore™ Block Overview .....                       | 116 |
| Exhibit 115: DUS ASIC DSP Area 1 and 2 Overview .....                                | 117 |
| Exhibit 116: ARM/CEVA DSP Complex in DUS ASIC .....                                  | 119 |
| Exhibit 117: DUS ASIC "H" Block – DSP Subsystem .....                                | 121 |
| Exhibit 118: DUS ASIC Analog/SerDes I/O .....                                        | 122 |
| Exhibit 119: DUS ASIC Analog Structure Overview .....                                | 123 |
| Exhibit 120: DUS ASIC X-Block Detail and Substructures .....                         | 124 |
| Exhibit 121: DUS ASIC Digital I/O Blocks Detail, 1-12 .....                          | 124 |
| Exhibit 122: Analog block 1 (AN1) and 3 (AN3) with X-block detail .....              | 125 |
| Exhibit 123: DUS ASIC 2- and 4-lane Switch Structures .....                          | 126 |
| Exhibit 124: DUS ASIC ROM and ARM Core Overview .....                                | 127 |
| Exhibit 125: DUS ASIC Area 3: ARM Core A3 Block Overview .....                       | 128 |
| Exhibit 126: DUS ASIC Area 4: ARM Cortex-A* A4 Block Overview .....                  | 129 |
| Exhibit 127: DUL ASIC I/O Overview .....                                             | 130 |

|                                                                         |     |
|-------------------------------------------------------------------------|-----|
| Exhibit 128: DUS ASIC Digital I/O Blocks Detail, 1-12 .....             | 130 |
| Exhibit 129: DUS ASIC B and D Block Switch Structure Overview .....     | 131 |
| Exhibit 130: DUS ASIC B Block Switch Structure Detail .....             | 131 |
| Exhibit 131: DUS Buffer Memory Block .....                              | 132 |
| Exhibit 132: DUS ASIC D Block Switch Structure Detail .....             | 132 |
| Exhibit 133: DUS ASIC Analog AN2 and its E Block Controller .....       | 133 |
| Exhibit 134: DUL ASIC E Block for Ethernet Control and Management ..... | 133 |
| Exhibit 135: DUL ASIC F Block Overview .....                            | 135 |
| Exhibit 136: DUS ASIC G Block – RapidIO® Subsystem .....                | 136 |
| Exhibit 137: DUS ASIC G Block Structure Overview .....                  | 136 |
| Exhibit 138: DUS ASIC “G” Block Structure Detail .....                  | 137 |
| Exhibit 139: DUS ASIC “K” Block Structure Overview .....                | 138 |