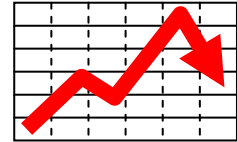


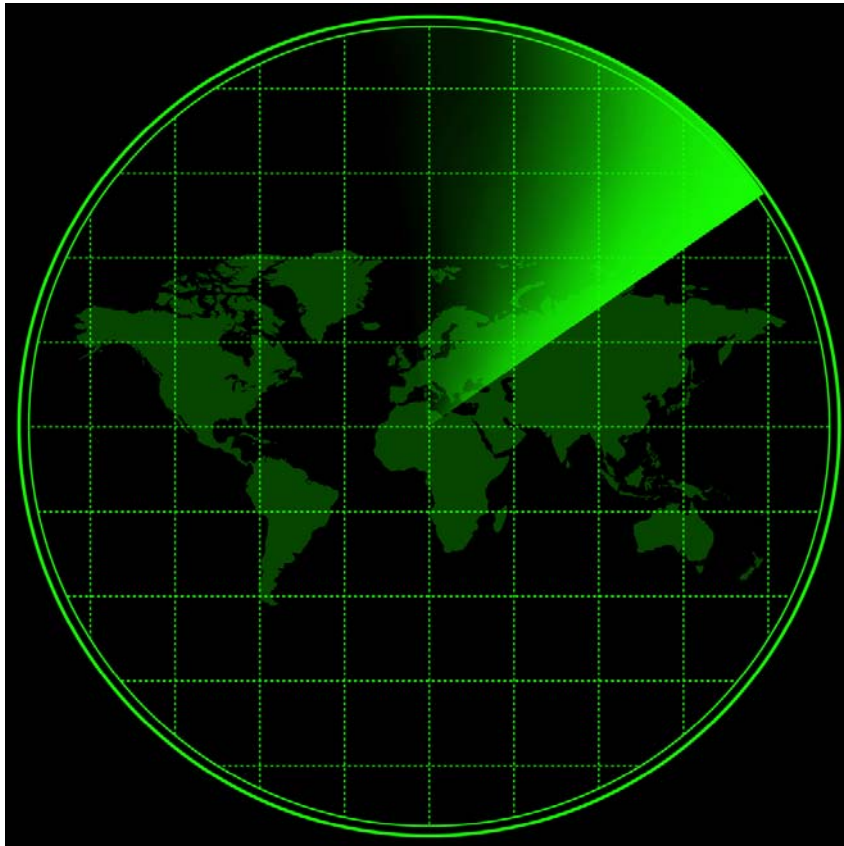
Earl J. Lum
+1-650-430-2221
elum@ejlwireless.com



Supply Chain and End Customer Impact of United States Commerce Department Restrictions for ZTE Corporation

“Under the Radar” Research Series

March 14, 2016



Entire contents © 2016 EJL Wireless Research LLC. All Rights Reserved. Reproduction of this publication in any form without prior written permission is strictly forbidden and will be prosecuted to the full extent of US and International laws. The transfer of this publication in either paper or electronic form to unlicensed third parties is strictly forbidden. The information contained herein has been obtained from sources EJL Wireless Research LLC deems reliable. EJL Wireless Research disclaims all warranties as to the accuracy, completeness, or adequacy of such information. EJL Wireless Research LLC shall bear no liability for errors, omissions, or inadequacies in the information contained herein or for the interpretation thereof. The reader assumes sole responsibility for the selection of these materials to achieve their intended results. The opinions expressed herein are subject to change without notice. All product and company names are trademarks™ or registered® trademarks of their respective holders. Use of them does not imply any affiliation with or endorsement by them.

TABLE OF CONTENTS

| | |
|---|----|
| MARKET BRIEF | 2 |
| Background..... | 2 |
| Methodology | 4 |
| ZTE SUPPLY CHAIN PERSPECTIVE- THE COMPANY NO LONGER EXISTS | 5 |
| Direct ZTE Mobile Handset Suppliers | 5 |
| Direct ZTE Infrastructure Suppliers..... | 6 |
| SUPPLY CHAIN IMPACT ANALYSIS-1ST, 2ND AND 3RD ORDER EFFECTS | 8 |
| March 2016 Quarter Supplier Impact | 8 |
| June 2016 Quarter Supplier Impact | 8 |
| September 2016 Quarter Supplier Impact..... | 9 |
| Beyond September 2016 Quarter Supplier Impact | 9 |
| CUSTOMER IMPACT ANALYSIS..... | 11 |
| March 2016 Quarter Supplier/Customer Impact | 11 |
| June 2016 Quarter Customer Impact | 13 |
| September 2016 Quarter Customer Impact..... | 14 |
| WIDENING OF U.S. COMMERCE DEPARTMENT PROBE-ARMAGEDDON SCENARIO .. | 15 |
| Summary..... | 16 |