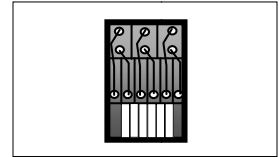
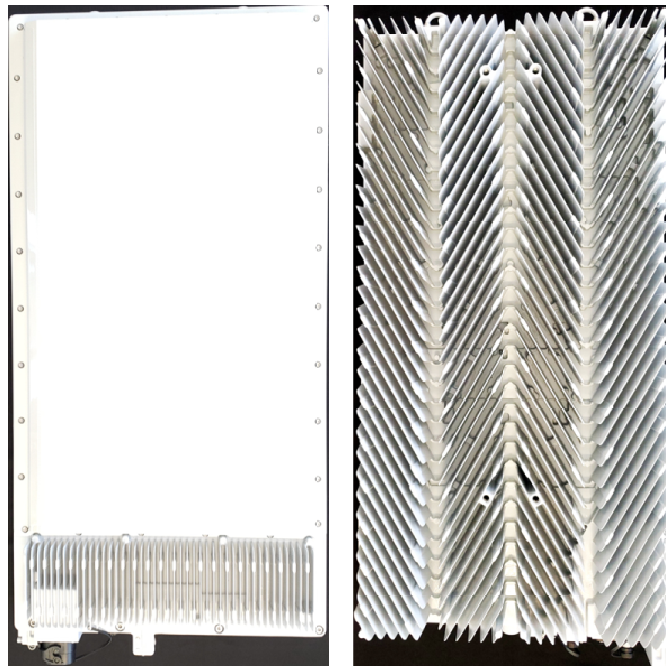


Earl J. Lum
+1-650-430-2221
elum@ejlwireless.com



ZTE Corporation
5G NR Band n78
Model ZX-RAN A9611 S35

September 2020



Entire contents © 2020 EJL Wireless Research LLC. All Rights Reserved. Reproduction of this publication in any form without prior written permission is strictly forbidden and will be prosecuted to the full extent of US and International laws. The transfer of this publication in either paper or electronic form to unlicensed third parties is strictly forbidden. The information contained herein has been obtained from sources EJL Wireless Research LLC deems reliable. EJL Wireless Research disclaims all warranties as to the accuracy, completeness or adequacy of such information. EJL Wireless Research LLC shall bear no liability for errors, omissions or inadequacies in the information contained herein or for the interpretation thereof. The reader assumes sole responsibility for the selection of these materials to achieve their intended results. The opinions expressed herein are subject to change without notice.

TABLE OF CONTENTS

EXECUTIVE SUMMARY	7
Active/Passive Component Summary	7
Important Note:	7
CHAPTER 1: ZTE AAU	8
Overview of Active Antenna Unit	8
CHAPTER 2: PRIMARY CHASSIS/HEATSINK.....	15
2.1 Primary AAU Heat Transfer Fins Analysis.....	24
2.2 Secondary AAU Power Supply Heat Transfer Fins Analysis	28
CHAPTER 3: POWER SUPPLY SUBSYSTEM.....	32
3.1 Power Supply PCB Analysis	38
CHAPTER 4: L1/RADIO TRANSCEIVER SUBSYSTEM	51
Area A Analysis.....	54
Area B Analysis.....	65
Area C Analysis.....	68
Area D Analysis	71
Area E Analysis.....	76
Area F Analysis.....	79
Area G Analysis	82
Area H Analysis	86
Area I Analysis	88
CHAPTER 5: RF FILTER SUBSYSTEM	91
5.1 RF Filter Frame/Shield Analysis.....	95
CHAPTER 6: ANTENNA SUBSYSTEM	100
6.1 Antenna Specifications	100
6.2 Antenna Radome Analysis.....	101
6.3 Antenna Frame Analysis	102
6.4 Signal Distribution/Combiner Network PCB Analysis.....	105
6.5 Antenna Array Analysis.....	117
6.6 Antenna Element Analysis.....	128
APPENDIX A.....	132
APPENDIX B.....	134
APPENDIX C.....	136
APPENDIX D.....	140

TABLES

Table 1: AAU Power Supply PCB Top Bill of Materials	49
Table 2: AAU Power Supply PCB Bottom Bill of Materials	49
Table 3: Area A Configuration by Sub Section C Types	62
Table 4: Area A1Ax/A2Ax/A3Ax/A4Ax Bill of Materials	64
Table 5: Area A1Bx/A2Bx/A3Bx/A4Bx Bill of Materials	64
Table 6: Area A1/C1 Bill of Materials	64
Table 7: Area A2C1/A2C3/A4C1/A4C3 Bill of Materials	64
Table 8: Area A1C2/A1C3/A1C4/A3C1/A3C3/A4C2 Bill of Materials	64
Table 9: Area A2C2 Bill of Materials	64
Table 10: Area A3C2 Bill of Materials	64
Table 11: Area B1 Bill of Materials	67
Table 12: Area B2 Bill of Materials	67
Table 13: Area C Bill of Materials	70
Table 14: Area D1 Bill of Materials	74
Table 15: Area D2 Bill of Materials	75
Table 16: Area D3 Bill of Materials	75
Table 17: Area E Bill of Materials	78
Table 18: Area F Bill of Materials	81
Table 19: Area G1 Bill of Materials	85
Table 20: Area G2 Bill of Materials	85
Table 21: Area G3 Bill of Materials	85
Table 22: Area G4 Bill of Materials	85
Table 23: Area H1 Bill of Materials	87
Table 24: Area H2 Bill of Materials	87
Table 25: Area I1A Bill of Materials	90
Table 26: Area I1B Bill of Materials	90
Table 27: Area I3 Bill of Materials	90
Table 28: Radio Transceiver PCB Areas by Component Type	134
Table 29: Radio Transceiver PCB Areas by Component Type (con't)	134
Table 30: Radio Transceiver PCB Areas by Component Type (con't)	134
Table 31: Power Supply PCB Areas by Component Type	135
Table 32: Radio Transceiver PCB Areas by Active Component Vendor	136
Table 33: Radio Transceiver PCB Areas by Active Component Vendor (con't)	137
Table 34: Radio Transceiver PCB Areas by Active Component Vendor (con't)	138
Table 35: Power Supply PCB Areas by Active Component Vendor	139
Table 36: AAU PCB Areas by Passive/Connector/Other Component Vendor	140
Table 37: AAU PCB Areas by Passive/Connector/Other Component Vendor (con't)	141
Table 38: AAU PCB Areas by Passive/Connector/Other Component Vendor (con't)	142

EXHIBITS

Exhibit 1: ZTE Corporation 5G NR AAU Solution Example	8
Exhibit 2: ZTE A9611 S35 Specifications	9
Exhibit 3: A9611 S35 Electronic/Mechanical System Components	10
Exhibit 4: ZTE AAU System Partitioning Diagram	10
Exhibit 5: ZTE AAU RF Beamforming Function Diagram	11
Exhibit 6: A9611 S35 System Block Diagram, Baseband/Beamforming	11
Exhibit 7: A9611 S35 System Block Diagram, Digital Front End and Radio Transceivers	12
Exhibit 8: A9611 S35, Front View (L) and Rear View (R)	13
Exhibit 9: A9611 S35, Bottom View	14
Exhibit 10: A9611 S35, Left Side View	14
Exhibit 11: A9611 S35, Right Side View	14
Exhibit 12: A9611 S35 Chassis/Heatsink, Top View	15
Exhibit 13: A9611 S35 Chassis/Heatsink, Bottom View	15
Exhibit 14: A9611 S35 Chassis/Heatsink with Guide Pin and Gasket Detail	16
Exhibit 15: A9611 S35 Chassis/Heatsink Thermal Insert and Thermal Pedestal Detail	17
Exhibit 16: Type 1a Thermal Insert Detail, Top	18
Exhibit 17: Type 1a Thermal Insert Detail, Bottom	18
Exhibit 18: Type 1b Thermal Insert Detail, Top	19
Exhibit 19: Type 1b Thermal Insert Detail, Bottom	19
Exhibit 20: Type 2a Thermal Insert Detail, Top	20
Exhibit 21: Type 2a Thermal Insert Detail, Bottom	20
Exhibit 22: Type 2b Thermal Insert Detail, Top	21
Exhibit 23: Type 2b Thermal Insert Detail, Bottom	21
Exhibit 24: Type 3 Thermal Insert Detail, Top	22
Exhibit 25: Type 3 Thermal Insert Detail, Bottom	23
Exhibit 26: A9611 S35 Bracket Mount Locations	24
Exhibit 27: A9611 S35 Heat Transfer Fin Configuration	24
Exhibit 28: A9611 S35 Heat Transfer Fin Types	25
Exhibit 29: A9611 S35 Chassis and Fin Height	26
Exhibit 30: Heat Transfer Fin Supports	26
Exhibit 31: AAU Heat Transfer Fin Type ⑥ Dimensions	27
Exhibit 32: Power Supply Heat Transfer Fins	28
Exhibit 33: RF Filter Subframe and Power Supply Heat Transfer Fins	28
Exhibit 34: Power Supply Heat Sink and Heat Transfer Fin Detail	29
Exhibit 35: Power Supply Heat Transfer Fin Types and Locations	30
Exhibit 36: Heat Transfer Fin ① and ② Detail	30
Exhibit 37: Heat Transfer Fin ③④⑤ Detail	31
Exhibit 38: Power Supply Heat Transfer Fin ② Dimensions	31
Exhibit 39: AAU Power Supply Location, Bottom	32
Exhibit 40: AAU Power Supply Location, Top	32
Exhibit 41: AAU Power Supply, Shield Removed	33
Exhibit 42: AAU Power Supply Module Removed	33
Exhibit 43: AAU Power Supply Input Terminal Busbar Detail	34
Exhibit 44: AAU Power Supply Module Top Shield, External View	35
Exhibit 45: AAU Power Supply Module Top Shield, Internal View	35
Exhibit 46: AAU Power Supply Bottom Heatsink External View	36
Exhibit 47: AAU Power Supply Bottom Heatsink Heat Pipe Details	37
Exhibit 48: AAU Power Supply Bottom Heatsink Internal View	37
Exhibit 49: Power Supply PCB Dimensions	38
Exhibit 50: Power Supply PCB Top Component Diagram	40
Exhibit 51: Power Supply PCB Bottom Component Diagram	41
Exhibit 52: Power Supply PCB Area A Component Diagram	42
Exhibit 53: Short bar Example, Enlarged Detail	43
Exhibit 54: SBxx Dimensions	43
Exhibit 55: SA3/SA4 (L) and SA5/SA6 (R) Locations	45
Exhibit 56: SB101 and SB102 Locations	45
Exhibit 57: Short Bar Locations, PCB TOP	46
Exhibit 58: Short Bar Locations, PCB BOTTOM	47
Exhibit 59: Unidentified Markings	48
Exhibit 60: AAU Power Supply Circuit Diagram	50
Exhibit 63: Radio Transceiver PCB, Top View	52
Exhibit 64: Radio Transceiver PCB, Bottom View	53

Exhibit 65: Area A1 Subsections	54
Exhibit 66: Area A2 Subsections	54
Exhibit 67: Area A3 Subsections	55
Exhibit 68: Area A4 Subsections	55
Exhibit 69: Area AxAy Component Diagram	56
Exhibit 70: RF Power Amplifier PCB Board Details	57
Exhibit 71: RF Tx Output Tuning Areas	58
Exhibit 72: RF Transceiver Block Diagram	59
Exhibit 73: RF TRx PCB Layout, Top and Bottom	60
Exhibit 74: Area AxBy Component Diagram	61
Exhibit 75: Area AxCv Component Diagram	62
Exhibit 76: Area AxCw Component Diagram	62
Exhibit 77: Area AxCy Component Diagram	63
Exhibit 78: Area AxCz Component Diagram	63
Exhibit 79: Area B Locations	65
Exhibit 80: Area B1 Component Diagram	66
Exhibit 81: Area B2 Component Diagram	66
Exhibit 82: Area C 8 Channel Block Example	68
Exhibit 83: Area C Component Diagram	69
Exhibit 84: Area C Radio Channel Mapping	69
Exhibit 85: Area D1 Component Diagram	72
Exhibit 86: Area D2 Component Diagram	72
Exhibit 87: Area D3 Component Diagram	73
Exhibit 88: Area D Radio Channel Mapping	74
Exhibit 89: Area E Component Diagram	77
Exhibit 90: Area F Component Diagram	80
Exhibit 91: Area G1 Component Diagram	82
Exhibit 92: Area G2 Component Diagram	82
Exhibit 93: Area G3 Component Diagram	83
Exhibit 94: Area G4 Component Diagram	83
Exhibit 95: Dual Channel RF Transceiver IC Circuit Layout	84
Exhibit 96: Dual A/D and D/A Transceiver IC Circuit	84
Exhibit 97: Area H1 Component Diagram	86
Exhibit 98: Area H2 Component Diagram	86
Exhibit 99: Area I1A Component Diagram	88
Exhibit 100: Area I1B Component Diagram	88
Exhibit 101: Area I2 Component Diagram	88
Exhibit 102: Area I3 Component Diagram	89
Exhibit 103: AAU RF Filter Shield/Frame, Top View	91
Exhibit 104: RF Filter Mounting Locations	92
Exhibit 105: RF Frame/Shield Mounting Locations	93
Exhibit 106: AAU RF Filter Shield/Frame, Bottom View	94
Exhibit 107: RF Filter Frame/Shield Dimensions	95
Exhibit 108: RF Filter Input Ports on RF Frame/Shield	96
Exhibit 109: RF Filter Label	96
Exhibit 110: RF Filter Dimensions, Top and Bottom Views	97
Exhibit 111: RF Filter Dimensions, Side Views	97
Exhibit 112: RF Filter Barcode Examples	98
Exhibit 113: RF Filter Case Markings, Laser Etched	98
Exhibit 114: RF Filter Case Markings, Cast	98
Exhibit 115: RF Signal Path for RF Filter, Top and Bottom Views	99
Exhibit 116: RF Signal Path for RF Filter, Side View	99
Exhibit 117: A9611 S35 Antenna Array Specifications	100
Exhibit 118: A9611 S35 Antenna Array Configuration	100
Exhibit 119: A9611 S35 Antenna Radome, External View	101
Exhibit 120: A9611 S35 Antenna Radome, Internal View	101
Exhibit 121: Antenna Product Label	102
Exhibit 122: Antenna Element Array /Signal Distribution Network Assembly (Top View)	103
Exhibit 123: Antenna Element Array /Signal Distribution Network Assembly (Bottom View)	103
Exhibit 124: Grommet Locations	104
Exhibit 125: A132M-A2 PCB Layout	105
Exhibit 126: Barcode Detail	106
Exhibit 127: Signal Distribution Board Assembly Information	106
Exhibit 128: Cutout Detail Enlarged	106

Exhibit 129: Cutout Detail, Dimensions.....	107
Exhibit 130: Cut Out Ground Pattern	107
Exhibit 131: Exposed Microstrip Tuning Area	107
Exhibit 132: A132M-A2 Resistor Value Color Codes	108
Exhibit 133: Resistor Silkscreen Values.....	108
Exhibit 134: Resistor Value Color Code Chart	109
Exhibit 135: RF Pass Through Connector PCB Detail	109
Exhibit 136: RF Pass Through Connector Solder Details	110
Exhibit 137: A132M-A2 32 Channel Branch Combiner Electrical Circuit for Calibration.....	111
Exhibit 138: A132M-B2 PCB Layout	112
Exhibit 139: Barcode Detail.....	113
Exhibit 140: Signal Distribution Board Assembly Information.....	113
Exhibit 141: Resistor Value Color Code Chart	113
Exhibit 142: A132M-B2 Resistor Value Color Codes	114
Exhibit 143: A132M-B2 32 Channel Branch Combiner Electrical Circuit for Calibration.....	115
Exhibit 144: RF Filter/Antenna Cross Section Diagram	116
Exhibit 145: Antenna Array, Columns	117
Exhibit 146: Antenna Array, Rows.....	117
Exhibit 147: Antenna Array, Columns by Sub-Arrays	118
Exhibit 148: Antenna Array, PCB Groups.....	118
Exhibit 149: Antenna PCB Group Identification Markings	119
Exhibit 150: Antenna PCB Group Markings/Barcode.....	119
Exhibit 151: Antenna Array Mounting Diagram	120
Exhibit 152: Antenna Array Metalized PCB Grounding Bus Bar Details.....	121
Exhibit 153: Antenna Array Metalized PCB Grounding Bus Bar Diagram	121
Exhibit 154: PCB Grounding Bus Bar Attachment Detail	122
Exhibit 155: Metal Bus Bar, Side View	122
Exhibit 156: Antenna Array Metal Bus Bars	123
Exhibit 157: Metal Bus Bar, Top View	123
Exhibit 158: Solder Masks for Antenna Array Tuning Tabs.....	124
Exhibit 159: Antenna Array Tuning Tab Locations	124
Exhibit 160: Antenna Array Tuning Tab Details	125
Exhibit 161: Tuning Tab Details, Top, Bottom, and Side Views.....	125
Exhibit 162: Antenna Array PCB Group Details.....	126
Exhibit 163: Antenna Sub-Array Block Diagram	126
Exhibit 164: Antenna Sub Array Feeder Circuit, Special (Top) and Standard (Bottom)	127
Exhibit 165: Z26C Radiator Antenna Element PCB Top (Left) and Bottom (Right) Views.....	128
Exhibit 166: Z26C Radiator Antenna Element, Top Facing View.....	129
Exhibit 167: Z26C Antenna Element Circuit Side Views, Removed from Array, Z-Axis	130
Exhibit 168: Z26C Antenna Element Circuit Side Views, Mounted to Array, Z-Axis.....	130
Exhibit 169: Antenna Dipole Circuit 9611-D6 Ground (Left) and Signal (Right) Views	131
Exhibit 170: Antenna Dipole Circuit 9611-G6 Ground (Left) and Signal (Right) Views	131
Exhibit 171: Component Market Share by Type	132
Exhibit 172: Active Semiconductor Market Share by Vendor	133
Exhibit 173: Active Semiconductor Market Share by Vendor, 64+ Pin	133
Exhibit 174: Passive/Connector/Other Component Market Share by Vendor	143